



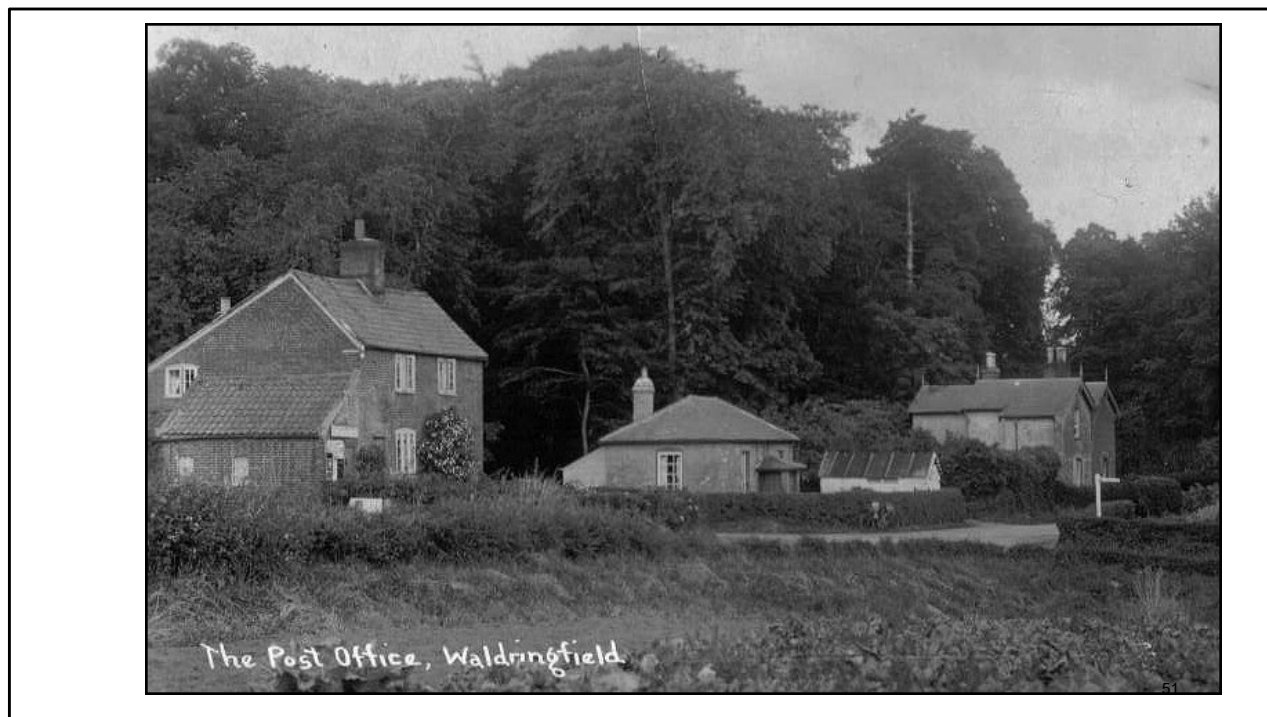
Welcome back. If you recall, we are proceeding with Joe and Stan's hundred year old walk and approaching the top of The Street, now known as Fishpond Road

At the **end of The Street**, at the corner with the old Woodbridge Road we can look back at Rectory Lodge. Dig this tall man and his cap.



Compare that with today

– no tall man in a cap. The state of the road doesn't seem much different



This next plate gives a wider **view of the cross-roads**

with the Old school house, two Pretyman cottages and the post office annexe.



A similar picture today shows.....

perhaps the **most dangerous bend known to man**

The first motor car in the village



53

Maybe on our old walk will see the **first car** in the village – which belonged to Mr Sutton, the schoolmaster



54

Or we may see Georgiana Waller in her donkey-drawn chair with Kate, her sister, **BUT** I have to admit that we had no idea where this glass plate photograph was taken. Until last week - more later. Any ideas?

Mrs Bloomfield & the Chapel outing



55

Just the same as the fact that we do not know if this plate

was down to TNW. It's certainly a plate and it was in Joe and Stan's talk. The hats are amazing.

Pretyman Cottages



56

Continuing on the walk we look back from School Road to get a better look at the Pretyman cottages and the post office



57

And looking back from the **lowermost part of School road** we see we are being followed by two groups of schoolchildren, obviously on an outing. Outings were big things in those days.



58

This and the next few photographs (58-61) give us an opportunity to look very carefully and compare with today. Here we see **'The Lilacs'** which started life as two attached dwellings and **here we see a building with two gable ends** and attractive bargeboards similar to other buildings in the village. That building used to belong to TNW's son, Cyril; it is seen in this plate



separated from the road by a mixed hedge. However it is another 19th century building which is no longer with us. Instead we have a telegraph post lying at a jaunty angle



And a bungalow hidden behind a tall fence.



61

It is interesting that there are no photographs of the school in Joe and Stan's walk. although there are one or two schoolgroups which may have been taken by TNW – remember that throughout the period of this photography he lived away from the village.

36 pupils, three teachers and a hat!



62

We cannot be sure from where this glass plate was taken but look very carefully in the middle and you will see the windmill which was responsible for the naming of Mill Road. Yes, there was a windmill at the time that TNW was taking his glass plate pictures and it features in several of his plates

Waldringfield Mill c.1905



63

Note that this plate features the mill, the mill house and the Church



Horses posing for the camera !!

The mill became very unsafe and was demolished in 1916.



65

It makes one think that perhaps it had been demolished by the time that this photograph was taken.....

it is so ghostlike, it gives the impression that the windmill has been superimposed - who knows? After all photography was advancing but they hadn't reached photoshop levels by then!



66

That scene hasn't changed much but, of course, the Church is, by far, the oldest building in Waldringfield.



67

And here we have a nicely composed artistic TNW picture of the church

Except that this is **NOT** Waldringfield Church. There are clues that tell us **this is Hemley**. Look very closely at the porch and the white headstone of William Cavell incorporated in the east wall and the windows of the nave. The Rector here between 1697 and 1719 and gt gt grandfather of Edith Cavell

So, we have obviously skipped out of the village for that bit of our walk 100 years ago



68

Completing Joe and Stan's walk involves going from the Church, past Church Farm – another of the oldest properties in the village, probably the site of the original Hilton Manor House. If you want to know more about that you will have to read the book.



69

The property nearest the southern border of the parish of Waldringfield is White Hall



70

where in 1897 they celebrated Queen Victoria's Diamond Jubilee.

Was this a line up for a wheel barrow race, one asks? And is the lady in the bath chair going to win- or has she just won?

Ramsholt 1890's



71

TNW got around a bit with his cameras, despite their size. Here are some of the pictures taken in other locations.

Ramsholt in the 1890s where we realised only recently - at our last meeting - that there are features (*the gate, the wall of the house and the tree*) resembling those in the unplaced Georgiana plate

But it's a long way to take a donkey!



Wilford Bridge



73

Then there's Wilford Bridge

The composition in this plate is quite something. I think you'll agree. I love the texture of the water.

The slide was given to us this way around.....

Or should the slide be this way around?



But it does look as if this maybe another slide that has become flipped as this seems more familiar.

Red Lion



75

And now the 'Red Lion' at Old Martlesham

Red Lion



40



A coaching inn in which little has changed over the centuries



77

Joe included School Road in Old Martlesham and we do so again

mainly because of the means of transport and the appearance of that tall man in the cap on his bicycle. Have we seen him before?



The road and the area around are little changed

Except for the telegraph pole and all those buildings one can't quite see on the left!

But TNW always returned to his beloved Waldringfield by the Deben



79

Just look at the composition – it's just like a painting. And another taken on the beach

Ethel Waller and Frances



80

This is not the same donkey as we've seen before – what is interesting about this plate is the gun over the lady's arm! Ready to take a shot at a passing rabbit perhaps.



81

Here TNW has captured the cliff as it was before they put in the steps.



71



And this what it looks like now

Did you know there are 39 steps? I would like to take this opportunity to reassure the Nunns and the Turners that their beach hut does not really lean at that angle. Well, not when I **last** looked. It's a photographic quirk of a wide-angle lens. I think. Meanwhile,



83

at the water's edge we see boating lessons in progress – again it's a beautifully composed picture with the barge in the background leading one to focus on the activity. How many people today would set off in a skiff in a suit and a bowler hat?



84

No picture tour of Waldringfield would be complete without reference to the annual Regatta

and here we have a TNW of the regatta in 1909



85

Followed by dusk over the Deben

- Medieval Walk of **1348**, the days of Edward III
- Industrial Walk of **1890**, the days of Cement
- Wartime Walk of **1944**, the eve of D-Day
- Leisure Walk of **1970**, the era of R & R

So, there you have it – a walk round the village 120-130 years ago. Four similar walks are described in our book, but they are either geographically more extensive or more topic-specific – there is

a **medieval walk** in 1348, an **industrial walk** in 1890, a walk on the **eve of D-Day** and a leisure walk in the 1970s.

World War 1 & 2 Rolls of Service for Waldringfield, Newbourne and Hemley

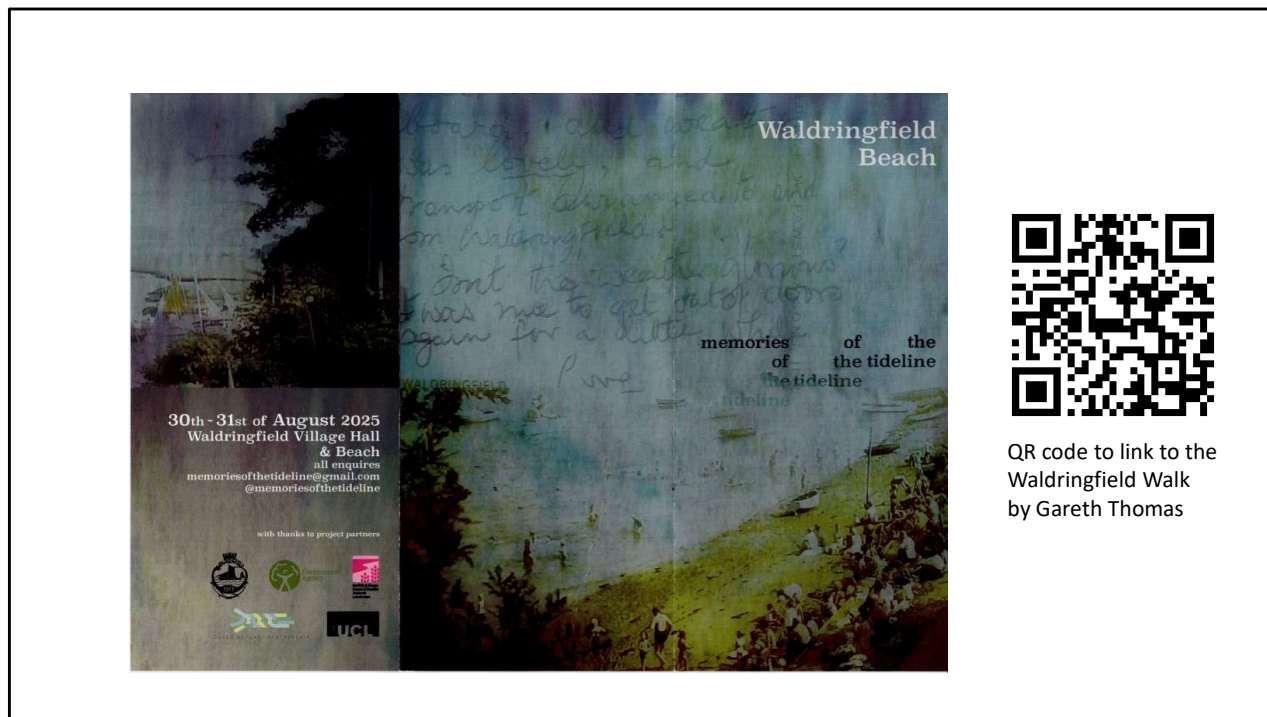


Mention of the Wartime Walk in the Book provides an appropriate opportunity to present our **first snippet** of **NEWS**. Many of you will be aware of the tremendous amount of work put into the production of **Rolls of Service**

relating to both **WWI and WWII** by two of our members, John and Caroline Ogden. These Rolls relate to all those people from Waldringfield, Hemley and Newbourne who were involved in those two conflicts, those who survived and those who paid the ultimate sacrifice. The **news** is that these Rolls, amounting to 360 pages in two volumes are now very close to completion of their preparation by our Chair, Alyson for publishing, - six copies – one for each of the four churches in the three parishes, All Saints, Waldringfield, The Baptist Chapel at Waldringfield Heath, All Saints at Hemley and St Mary the Virgin at Newbourne., one for Suffolk Records at The Hold and one for the History Group and their cupboard here in the Village Hall. If one counts the research pages which will be made available to Suffolk Records Office, the total comes to nearly a thousand pages.

Quite a feat, worthy of applause, I think.

So, **what else** do we have in the way of **News**?



Well our **second** snippet of news is that today we are launching another walk initiative – **The Waldringfield History Walk** – free to all comers and available through a QR code.

Many of you will recall ‘**The Memories of the Tideline**’ weekend in the Autumn last year

I volunteered to provide a history walk around the village and I anticipated taking a **dozen or so people** around so that, over the course of about two and a half hours, I could present to them a compendium of the four walks in the book.

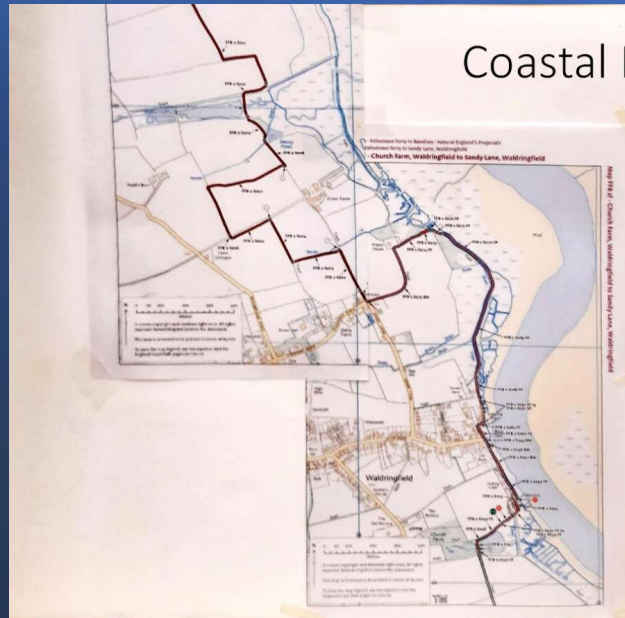
There were **thirty people on the first walk** and **thirty more** at a repeat a week or two later. We stopped at the best part of twenty places between the northern boundary with Martlesham and the southern boundary with Hemley. I am pleased to announce this evening that my notes have been made into a script, that another member, Jackie Brinsley has prepared a map and that, thanks to Ian Videlo, the whole is now available on-line by scanning a QR code thus enabling a Do-it-yourself version.



Our **third** snippet may not be news to most of you because it became headline national **news** last week on the 19th March 2026; however we feel it is important to ensure that everybody is aware of the **new King Charles III Coastal Path** - and it does have some relevance to another subject we wish to discuss

A week or so before the ‘Tideline’ weekend, the **local part** of the King Charles III Coastal Path was opened up and signposted. There were a **few surprises**

Coastal Path



– it **zig-zags** so much between here and the southern side of Martlesham Creek

that one covers about **twice the distance of the proverbial crow** – thus doubling the time you might expect to take. If you're hoping to walk to Woodbridge you might do better to do the first bit by road – but beware of the pot-holes.



The other surprise was the **elaborate signpost**

at the northern end of the river wall indicating either further north as a 'no-through footpath' - an interesting concept - or inland to 'Judges Bend', an almost lavatorial name for what used to be called Barrack Row.



The same again – I used to be decisive but now I'm not so sure! But they're not the same



– the River Deben and its skies are never, ever, the same, from one day to the next and that, to me, is its great beauty.

This renaming leads to our **fourth** snippet: In the course of leading the two Memories of the Tideline Walks down the track from Judges Bend toward Manor House Cottage



(remember this?) I was presented with two independent stories suggesting that the track was once called Blacksmith's Lane - one of the walkers advised me that she had an old painting of the lane and that it was actually entitled 'Blacksmith's Lane'.

On the second walk another of the walkers told me that several years ago she was walking her dog down this lane when she was approached by the driver of a car, searching his genealogy and looking for Blacksmith 's Lane where one of his ancestors had been the blacksmith. The History Group has newspaper evidence of a wheelwright's and blacksmith's workshop being at the bend in the lane until the mid 1800s. We therefore put it to the Parish Council about three months ago that an appropriate name for the lane would be Blacksmith's Lane and that it would be equally appropriate to call the bend in the lane Wheelwright's Corner – not Wheelwright's Bend, needless to say. We are awaiting a reply – they do have other more urgent matters to consider!

The Tideline weekend was a great success in **many** ways, including a mixed choir of 90 people performing a world first outside the Sailing Club and quite a finding for the **detectorists** demonstrating their activities on the beach.

So far, I have mentioned so-called news snippets but I am now going to hand you over to **detectorist David Cummings** to tell you first about the discovery on the beach and then about some of his other discoveries which you might well consider to be greater than snippets

10 minutes by David Cummings - *Detectorist* (separate slideshow belonging to David Cummings)

Well that's it folks – no Waldringfield Hoo but those Anglo-Saxons **must** have been here and those **Romans** too. We will keep looking for traces of these ancient folk and we will keep looking at more recent history in this precious village.

On that note it leaves me to say on behalf of the Group: Thank you for coming and a big thank you once again to Andy Pritchatt and David Cummings.