

Wrapping Up

I am told there are people who do not care for maps, and I find it hard to believe.

Robert Louis Stevenson



1839 Tithe Map

Maps and Charts of our Locality and River

For the benefit of future local historians and to feed those afflicted with curiosity, the relevant maps and charts we have found are listed here. For our book, we have regarded maps as dealing with the land and charts with the water. They are reproduced here only as small images to give a sense of content as we could not do them justice in a book format. Some are available by consulting the Book Notes on our website. Some observations have been made on differences from the 2020s but there is more work to be done regarding the history of the roads and paths in the village.

If the reader has or is aware of, other relevant charts or maps our group is eager to learn of them.

Maps

1360 Gough map of Great Britain . As one would expect this does not show our village. See www.goughmap.org

1576 Christopher Saxton : County Scale, shows Waldringfield. Rivers are interesting. The Saxton map is available online from the British Library.

1611 Speed map of Suffolk : County scale, shows "Waldringfelde", Brightwell river and Fynn river. No river to Shottisham

1722 Robert Morden map of Suffolk : Large scale, no relevant detail, distance scales interesting, not found online.

1783 Hodskinson's map of Suffolk : Large scale, some relevant detail. Shows Rivers Hall and Chilton Hall. We believe "Chilton" to be a copying error from extravagant writing of "Hilton". This may be the map that started this.

1796 Vernon Chart: Large scale, strong contour shading. Note Stoney Point, sea wall to the south but not north, no walls at Shottisham side. Otherwise does not show much new. A letter from Survey Superintendent, William Mudge, dated 11 October 1820, reads: "Mr Stanley is going with me ...to Woodbridge to examine what is necessary to be done with Mr Verron's Plans...I apprehend they are much worse than... I expected." It is an interesting coincidence that a Mr Stanley is involved since the 1845 Deben survey was produced by Captain Owen Stanley.



1800 Isaac Johnson Map

1800 Isaac Johnson map : No scale. Sandy Lane was referred to as “Leading to the Street” which was a previous name for Fishpond Road. Note also how Church Path continues directly from today's Sandy Lane without a dogleg (houses now occupy the old position). The line of Church Path fits with a large shadow on 1945 aerial photos. The status of the Northern part of Mill Road is unclear. Note how the road veers to the west from the Church and stops. Did Mill Road, if it existed at that time, take a different route?

1805 OS Map No. 169 Ipswich and The Naze : in the Cassini Historical Series of old Ordnance Survey mapping of England and Wales at 1:50,000 This may have been based on the 1783 Hodskinson's map of Suffolk since it repeats errors. This is not a very detailed map and may have been prepared from earlier maps. It shows "Chilton " Hall, probably a copying error from an extravagant "Hilton" in an earlier map.

1829 Glebe map :(related to the Church and not covered here) No scale. This looks like an Isaac Johnson map. Note the river is referred to as “The Ocean”. Mill Road is called “New Road”; we don't know when the Wind Mill was built.

1824 Bryant map : Large Scale of County. Shows the Maybush. Church Farm Cottages is "The Hall". Shows windmill and a few houses. 1837 One Inch Ordnance Survey¹ by Thomas Frederick Colby.² This may be the source for the terrain on the 1845 Deben survey as there are strong similarities.

1839 Tithe Map: This map, shown in the Chapter heading, was bought at auction by Steve Lomas who allowed us to copy it. Doing so was no mean feat as the map is 6 feet by 4 feet. Together with its apportionment, it tells us who was using each parcel of land and for what purpose. The field numbers on this map cross-reference to the Apportionment. A most valuable resource. Some extracts from this map are used in this book.

P L A N
OF THE PARISH OF
WALDRINGFIELD
SUFFOLK
— 1839 —

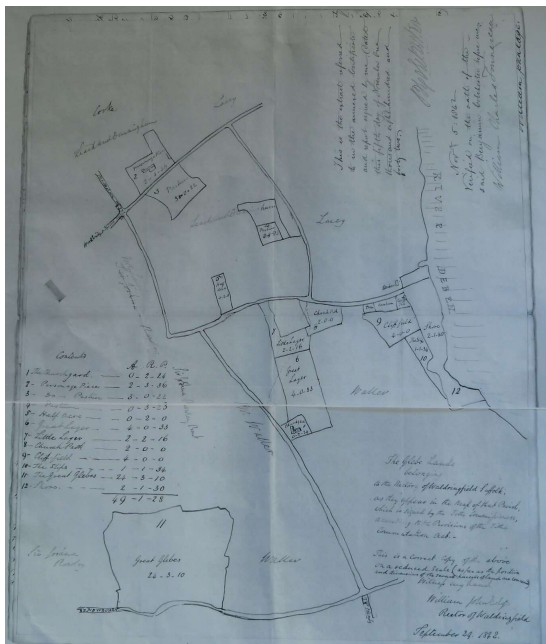
*We the Undersigned Tithe Commissioners for
England and Wales Do hereby Certify this to be a copy
of the Map or Plan referred to in the Apportionment
of the Rent Charge in lieu of Tithes in the Parish of
Waldringfield, in the County of Suffolk.*

As Witness our Hands
Signed { *Wm. Blomfield.*
T. W. Buller.

1839 Tithe map title panel

Wrapping Up

1842 Glebe map : No scale. Note the subdivision of fields in Church Lane Nd that Mill Road North is inked in.



1842 Glebe map

Ordnance Survey (OS): There is an 1881 OS map guide to Parish. Not all pages were properly scanned but of some interest. The 1881 OS 25" series is the earliest found at a large scale. Other useful editions include: 1902 OS 25" and 6"; 1907 OS 1; 1919 OS 1; 1925 OS 25"

The OS maps mentioned are available for our area. There are more modern ones of course. Links to these and others are on our website. The National Library of Scotland has a large collection of OS England maps. There are facilities to compare different maps side by side. Note: 25 inch is 1:2500 scale - most detail, 6 inch

Charts of our River

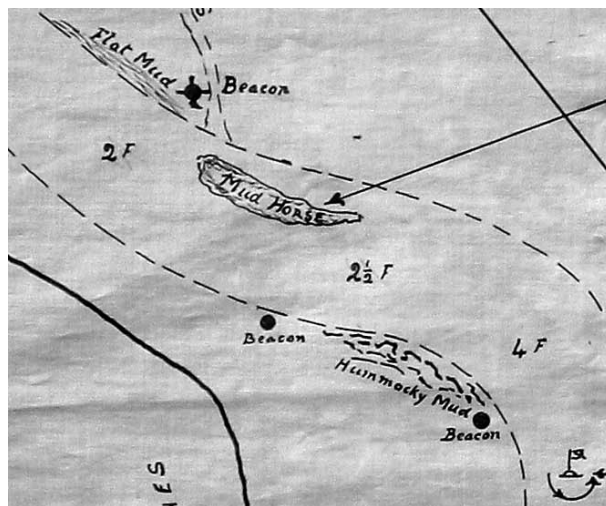
1539 Richard Cavendish : A coloured chart of the coast of Essex and Suffolk, from the Naze to Bawdsey showing the course of the Stour, Orwell, and Deben. Does not show the village nor name the Deben.

1801 Thames Estuary Chart by William Heather: Notes our presence but no detail.

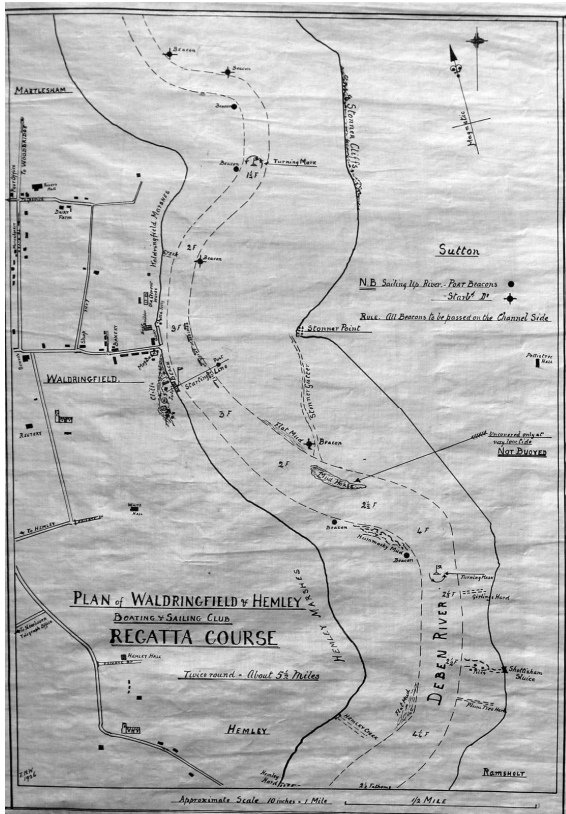
1845 Deben survey (see separate section) shows much better land detail than most earlier maps found to date. There may well be maps used to construct this chart which have not yet come to light although it has similarity with the 1837 Colby Map.

1885 6" OS maps of Deben showing flow are in storage at the Record Office pending their move. These should show something of interest, if only for swimmers or absolutely fanatical sailors, when available. Reference EF12/3/5/15.

1926 Regatta Chart: Ink on paper. 10" to the mile, depths in fathoms. Magnetic North arrow. By TNW (T.N.Waller almost certainly) A nicely traced chart from the Waldringfield and Hemley Boating and Sailing Club showing the Regatta Course. Some nice categorisations of mud and shows locations but not names of beacons. It shows Girling and Plum Tree hard. There are terrestrial points of interest including the Post Office, Shop, Bakery, and Telegraph Office in Newbourne. TNW must have enjoyed producing this chart as the level of detail is much greater than required. Once again we are in his debt. The detail below shows the draughtsmanship.



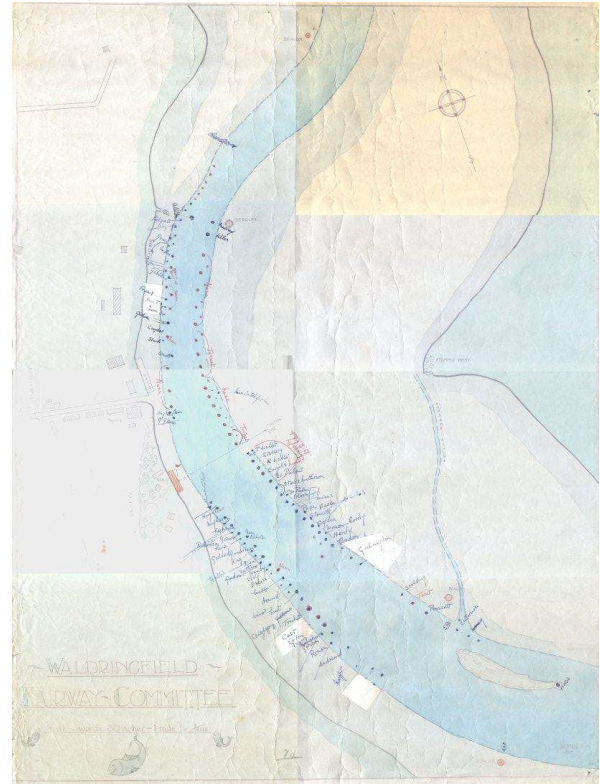
Maps and Charts of our Locality and River



1926 Regatta Chart

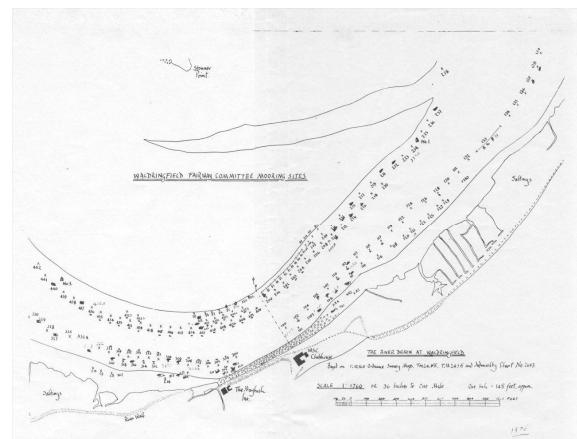
1944 There is a series of military charts of the coast including one for the Orwell chart. Sadly, it appears that the Deben was not covered in this series.

1945 Moorings Chart: 30 inches to the mile: Ink on paper with a watercolour wash. Scale bar. Magnetic North. Shows beacons. This has names on the moorings. A very attractive chart with decorative fish. Again the work of someone who enjoyed their work, 'E. Nunn's mooring chart received with "approbation" stated the WFC minutes... Courtesy WFC.



1945 WFC Moorings Chart

1976 Moorings Chart: Ink on tracing paper. Scale bar, offset from North-South. Shows numbered moorings although needs to be matched with an index. A well-produced, practical chart. Courtesy WFC.



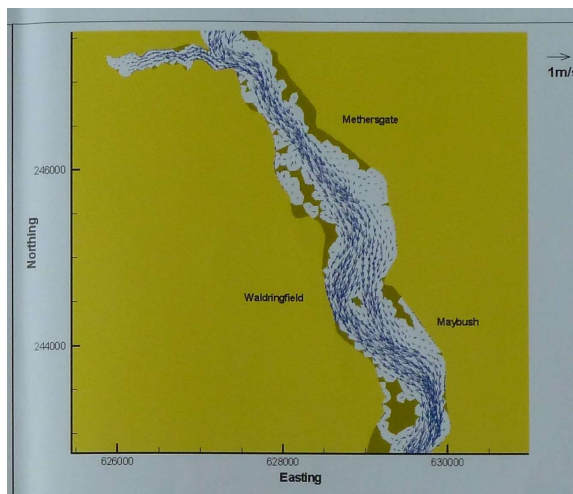
1976 WFC Moorings Chart

Deben Tidal Flow Chart . This came to the group from Andrew Haig who most likely acquired it through his WFC role. The chart divides the river into four sections and runs from HW-6 to HW+6. It does not state the port to use but

Waldingfield by the Deben

Wrapping Up

Harwich is a reasonable assumption. Other than the 1885 chart mentioned above no other tidal flow charts are known of the river. These would be of use to swimmers if they were reliable but not of much concern to others.



Late 20C Tidal Chart Village HW plus 2

1976 Imray Chart of Deben with IALA Buoyage shows names of reaches.

1981 & 1993 Stanfords "The East Coast: Cromer to Harwich" with IALA Buoyage. No names shown on the reaches.

2019 Parish Boundary: The official 2019 footpath map has a confusing Parish Boundary with a more southerly northern boundary and bulge at the Heath. Both maps courtesy of Suffolk County Council.

An Historical Atlas of Suffolk is a useful resource. ((An Historical Atlas of Suffolk - Suffolk Heritage Explorer.))

Enclosure maps: none have been found to date.

Online Public Data: During the twenty first century various sets of mapping data have become freely available online. Bathymetry data from Multi-Beam Sonar; Ordnance Survey has made some of its data available; LiDar data showing land elevation; Aerial Photograph tiles taken at Low Water which are superior to Google Earth. These data have been used in developing some of the maps shown in our book.

See our website DEFRA LiDar Data and sea levels for mapping.

Other sources worth a mention :

1941 1:25000 German High Command (there are also Oberkommando photographs of the Deben but not of the village).

1945 Google Earth Timeshift has good aerial reconnaissance photos of our area. This was a military area so there are some good wartime reconnaissance photographs with more detail.

1969 Soviet Military: maps are available but show nothing of interest.

May use Verso for large Tithe map?

¹ National Archives - Norfolk; Suffolk. Ordnance Survey One-inch Old Series England and Wales sheets XLIX SW

²Wikipedia Thomas Frederick Colby